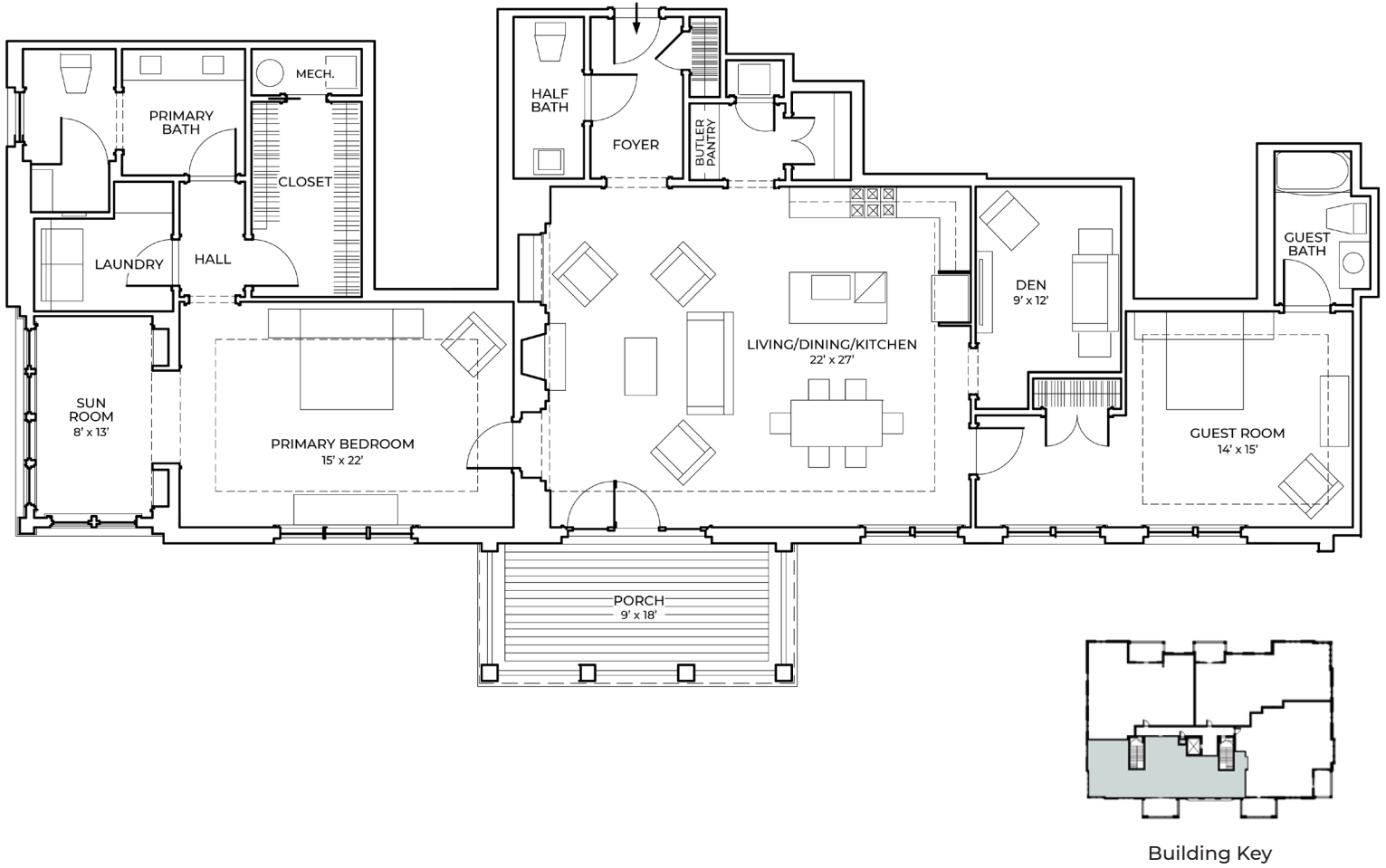


WHITE GABLES II



465 WHITE GABLES LN

Residences 101 & 201

TOTAL SQUARE FOOTAGE: 2,135 BEDROOMS: 2 BATHROOMS: 2.5

FEATURES: Sun Room, Covered Porch, Butler Pantry, Gas Fireplace, Quartz Countertops, Undermount Sinks, Kohler Fixtures, Gas Range, Bosch Appliances, Walk-In Closets with Wood Shelving

Located on the first and second floors overlooking a landscaped courtyard, this residence enjoys northern and western exposure to capture evening sunsets on the covered porch off the large open great room with custom built-ins and fireplace as well as the kitchen and dining room. This smart design packs a great deal of livability in just over 2,100 sq ft and includes a formal entry foyer, private guest suite, den and a large master suite that opens to a light-filled sunroom with large double-hung windows on two sides.

ABOUT THE BUILDING

White Gables II is a four-story, 14 residence condominium building with above grade parking on the ground level. Exterior elements include a stucco base at the ground level, with three stories of brick veneer and wood trimmed porches and stucco at the fourth floor. The roof is a dark brown metal parapet roof enclosing a flat membrane roof.

See following page for complete list of residence and building specifications.

SPECIFICATIONS

RESIDENCES

INTERIOR TRIM

Casting: Adams 3.5" (min) painted
1x8 baseboard with ogee (curved) cap
2-piece 4 $\frac{5}{8}$ " crown molding in foyer, living, dining, kitchen and primary bedroom if plan allows
2-panel solid interior doors with oil-rubbed bronze hardware
Closets: wood shelving with 1 $\frac{1}{4}$ " metal rod
Built-ins: Great room; built-in bookcase with fireplace surround

INTERIOR & EXTERIOR PAINT

Walls: Sherwin Williams, Flat finish (choose from designer selections)
Trim: Sherwin Williams, Semi-gloss finish, Super White
Ceilings: Sherwin Williams, Ceiling White

PORCHES & DECKS

Ceiling to be painted beadboard
Trex decking
Rails to be reinforced vinyl

WINDOWS & DOORS

Energy-efficient metal-clad wood windows and exterior doors with insulated glass
Exterior doors are factory primed solid wood
Exterior is metal-clad with metal casing and 2" metal sill

LIVING ROOM

Gas fireplace with granite (or equal) surround and custom wood mantel
Heat & Glo 6000 Clean Face in black
Built-in shelving at fireplace

KITCHEN

Saybrook cabinets with reverse raised panel shaker doors: full overlay face frame construction, wood Dovetail full extension undermount soft close drawer boxes, concealed soft close hinges, classic 5-piece drawer fronts
Quartz countertop
Tile backsplash
Sink: Signature Hardware stainless steel undermount
Faucet: Kohler single handle pull-out spray
Engineered hardwood floor (choose from designer selections)
Refrigerator: Bosch 3-door counter depth, B36CT80SN, stainless steel or equal
Gas Range: Bosch NGS8655UC, stainless steel or equal
Dishwasher: Bosch SHXM78Z55N, stainless steel or equal
Ductless vent hood: Bosch DPH30652CU, stainless steel or equal
Microwave: GE Profile PEM31SFSS, stainless steel or equal
LED under cabinet and recessed lighting

DINING ROOM

Engineered hardwood floor (choose from designer selections)
Cased openings to foyer and kitchen per plan
Chair rail and 3-piece crown molding detail if plan allows

PRIMARY BEDROOM

Carpet: Shaw, non-toxic, green label, 8-pound pad (choose from designer selections)
2-piece crown molding detail if plan allows

PRIMARY & GUEST BATHROOMS

Tile flooring
Tile shower and tub alcove walls; stain resistant grout; microban technology with lifetime warranty
Saybrook vanity cabinets
Sink: Signature Hardware white undermount
Quartz countertops
Faucet: Kohler Widespread, hot and cold handles
 $\frac{3}{8}$ " frameless glass shower door
Alcove tub: Signature Hardware 60" x 32", per selected plans
Freestanding tub: Signature Hardware 60" x 32", per selected plans
Toilet: Kohler Cimarron elongated comfort height
Tub/shower fixtures: Kohler single handle, primary with hand shower; HydroBlok shower system for latest in waterproofing technology
Mirror with painted wood frame; decorative lighting

POWDER ROOM

Toilet: Kohler Cimarron elongated comfort height
Console sink: Signature Hardware, white with chrome legs
Engineered hardwood flooring
Mirror per designer selection
Vanity lighting; decorative lighting

CLOSETS

Wood shelving with 1 $\frac{1}{4}$ " metal rod
Carpet: Shaw (choose from designer selections)

SECONDARY BEDROOMS

Carpet: Shaw (choose from designer selections)

SUN PORCH

Tile floor

LAUNDRY ROOM

Washer and dryer rough-ins
Cabinets: Mantra by Masterbrand, Omni, per selected plans
Countertops: LG solid surface, per selected plans
Shelving, per selected plans
Tile floor

MECHANICAL ROOM

HVAC unit: 14 SEER Trane heat pump with electric auxiliary heat
80-gallon electric hot water heater

SOUNDPROOFING

Corridor/resident walls have 3 layers of sheetrock and sound installation
Residence demising walls are staggered stud walls with sound insulation
Floor ceiling assembly has a Gyp-Crete topping, sound insulation and two layers of sheetrock on the ceiling
All assemblies have a sound transmission class (STC) rating of between 58-60

BUILDING CONSTRUCTION

STRUCTURE

Cast-in-place concrete foundation
Ground level cast-in-place concrete and CMU walls with concrete slab on grade floor
6" concrete floor on metal decking
2nd-4th floors: TJI joists and 2x6 exterior walls
Roof: TJI joists with parapet truss overbuild

CEILING HEIGHTS

8' 2" in basement parking and storage units
10' in main lobby, except where noted on plans
10' on residential floors, except where noted on plans

ELEVATOR

3,500-lb hydraulic elevator
Back-up generator
Wood interior paneling with stone tile floor

TRASH CHUTE

Access door on each level

INSULATION

R-19 batt insulation in exterior walls
R-38 batt insulation in roof and basement ceiling
Seal all windows, exterior doors, plate penetrations and outlet boxes
Sound insulation: unfaced rockwool at primary bedrooms, bath walls, resident separation walls and corridor walls; Gyp-Crete topping on floors

ROOF MATERIAL

Energy saving TPO membrane on flat roof
Prefinished standing seam metal on parapet roof
EPDM on porch floor system

SPRINKLER SYSTEM

Ground-level: fully sprinkled National Fire Protection Association NFPA 13 system

HVAC

Energy Star compliant 14 SEER Trane heat pumps with electric resistance auxiliary heat
Variable speed fans
10-year parts and labor extended warranty for HVAC
Programmable zone thermostats
Bath fans vent to exterior
High-efficiency 80-gallon electric water heaters
Electric space heaters in stairway

ENTRY LOBBY

Mag-lock entry access system
Interior designer selections
Painted drywall with 2-piece chair rail, 8" base with cap, 2-piece painted crown and Adams casting
Mail and package room

RESIDENTIAL LOBBIES

Interior designer selections
Wall sconces and decorative surface mounted ceiling fixtures
Painted drywall with 2-piece chair rail, 8" base with cap, 2-piece painted crown and Adams casting
Trash chute access on each floor